

# INTRODUCING THE FIELD MAG SERIES

## ELECTROMAGNETIC FLOW METER SUITE OF PRODUCTS

### FM3000 WITH PROCOMM GO™

*THE METER THAT WORKS WHERE YOU WANT IT, WHEN YOU WANT IT.*

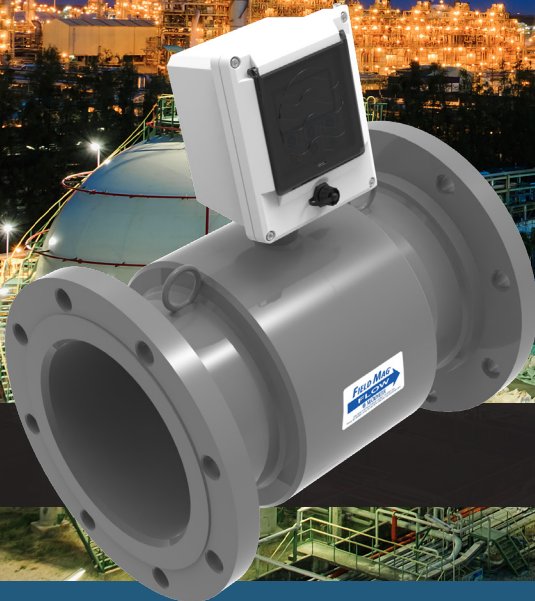


The Field Mag Series is a suite of flow measurement products curated to the water transfer industry. Offered with Victaulic fittings and welded feet for stability, the Field Series eliminates the hassle of traditional full-bore mag meter installation and transportation with heavy and cumbersome Victaulic to flange adapter kits. The Field Mag Series features McCrometer's proprietary fusion-bonded epoxy rather than a rubber or plastic liner, guaranteed against tearing and delamination for the lifetime of the meter. This durable, highly rugged piece of flow instrumentation gives operators and technicians peace of mind that their metering investment will withstand harsh environments and a multitude of flow applications.

The FM3 flow meter is accompanied by the ProComm Go™ electronics and is battery powered, ideal for remote installations and locations with unreliable power sources.

- Output options include pulse, 4-20mA, and telemetry
- Battery powered with optional AC/DC with battery backup
- Offering  $\pm 1\%$  accuracy
- Optional built-in verification
- DIY battery replacement and in-field converter programming available via USB cable and laptop
- 5-year full meter warranty, 5-year battery life





## FM5000 WITH PROCOMM™

### ***THE FIELD MAG SERIES CHANGES FLOW MEASUREMENT FOR THE WATER TRANSFER INDUSTRY.***

The Field Mag Series suite of meters are available in line sizes 1.5", 2", 2.5", 3" and 4 – 24" (101.6mm – 304.8mm). Larger sizes may be accommodated upon factory request. All meters in the Field Mag Series are rated to ANSI #150 pressures of 285psi or up to 500 psi for ANSI #300 and come with standard stainless-steel electrodes with optional Hastelloy. Additional customization is available within the meter electronics interface.



The FM5 is also offered with the Procomm™ electronics, offering greater accuracy and more sophisticated output options for users needing superior system integration and data collection.

- Output options include Hart, ModBus, 4-20mA
- Optional Class 1 Div 2
- AC/DC powered
- $\pm 0.5\%$  standard accuracy,  $\pm 0.2\%$  optional
- Bi-directional flow available
- Rated to 200F for high temperatures
- CRN (ANSI), CE, UL, CSA certifications